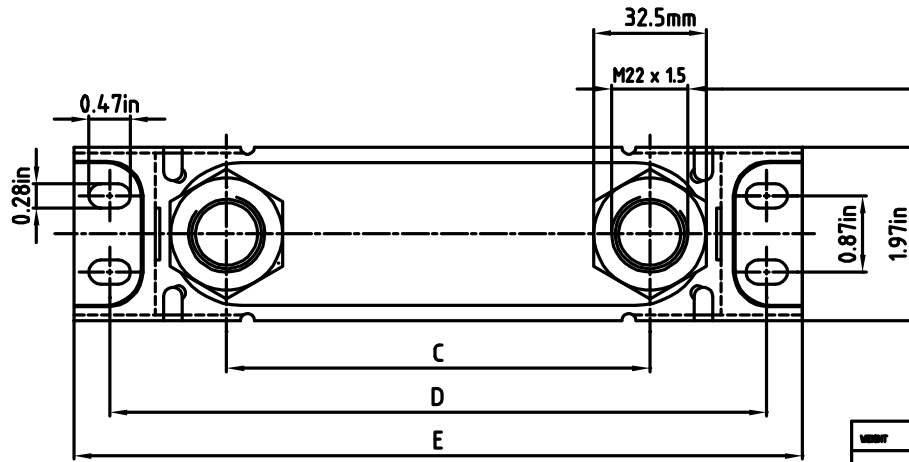
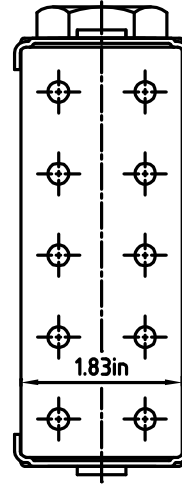
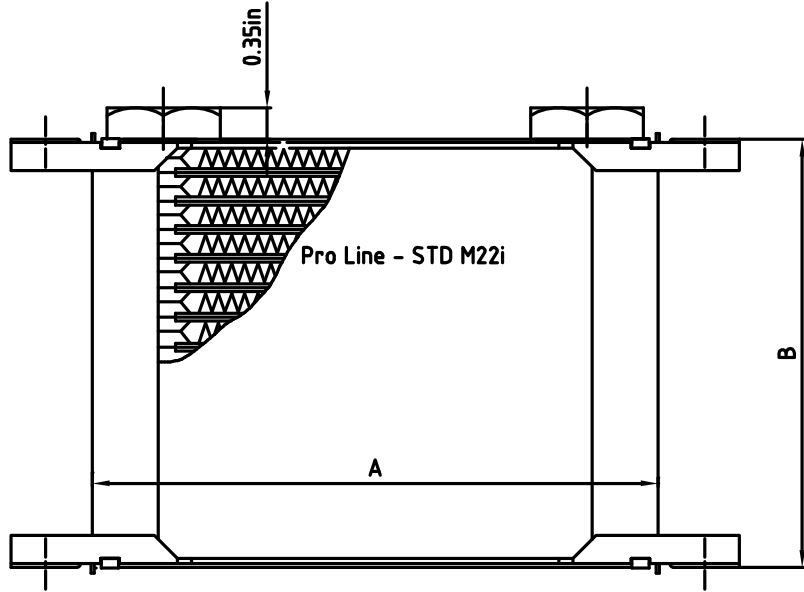


Pro Line - STD



Specialized "low-profile" Setrab ProLine Fittings sold seperately

Measure explanation, and Art. No. for Pro Line STD-coolers						
Art. No.	TYPE	A	B	C	D	E
50-107-7612	107	6.42	2.09	4.80	7.48	8.27
50-110-7612	110	6.42	2.99	4.80	7.48	8.27
50-113-7612	113	6.42	3.94	4.80	7.48	8.27
50-116-7612	116	6.42	4.80	4.80	7.48	8.27
50-119-7612	119	6.42	5.75	4.80	7.48	8.27
50-125-7612	125	6.42	7.60	4.80	7.48	8.27
50-150-7612	150	6.42	15.31	4.80	7.48	8.27
50-172-7612	172	6.42	22.13	4.80	7.48	8.27
50-607-7612	607	11.14	2.09	9.53	12.20	12.99
50-610-7612	610	11.14	2.99	9.53	12.20	12.99
50-613-7612	613	11.14	3.94	9.53	12.20	12.99
50-616-7612	616	11.14	4.80	9.53	12.20	12.99
50-619-7612	619	11.14	5.75	9.53	12.20	12.99
50-625-7612	625	11.14	7.60	9.53	12.20	12.99
50-634-7612	634	11.14	10.39	9.53	12.20	12.99
50-640-7612	640	11.14	12.20	9.53	12.20	12.99
50-650-7612	650	11.14	15.31	9.53	12.20	12.99
50-660-7612	660	11.14	18.31	9.53	12.20	12.99
50-910-7612	910	14.09	2.99	12.48	15.16	15.94
50-915-7612	915	14.09	4.53	12.48	15.16	15.94
50-920-7612	920	14.09	6.06	12.48	15.16	15.94
50-925-7612	925	14.09	7.60	12.48	15.16	15.94

TOLERANCE CLASS: ISO 2768-v PERMISSIBLE DEVIATIONS FOR LINEAR DIMENSIONS EXCEPT FOR BROKEN EDGES. (Inches)	.02in up to .12in	over .12in up to .27in	over .27in up to 1.8in	over 1.8in up to 4.72in	over 4.72in up to 15.74in	over 15.74in up to 39.37in
	-	±.02in	±.04in	±.06in	±.10in	±.16in

IDENT	PRO/VER	C/4							
VOLUME	DRAWN	DATE/VER				AL			
WORKING PRESSURE	145PSI	Dynamical	001102	HAS	PRO NO	CITY	DEPARTMENT	NATIONAL	OPERATION
MAX PRESSURE	174PSI	APPROVAL	DATE/VER		ALL DIMENSIONS REFER TO UNMOUNTED OBJECT				TOLERANCE CLASS: ISO 2768-v
TEST PRESSURE	58PSI	QUALITY			STDM221				ISO 2768-v
TEST ACC TO	BLACK EPOXY	PAINT			OILCOOLER				REPLACES
	100µm ±30µm	PAINT THICKNESS			Pro Line				REPLACED BY
	29.5lbs-ft	CUSTOMER			Setrab				CONNECTED DRAWING
					Pro Line - STD				SCALE
					Pro Line - STD				DRIVING IN

Application and performance charts are for reference only. Specific details can be acquired for any application by contacting Setrab Oil Coolers. (740) 965-8837.

Part #	Typical Application	HP range (EOC) *	ΔP in PSI (EOC) *	btu/hr range (EOC) *	btu/hr range (diff/trans) **	ΔP in PSI (diff/trans) **
113M22I	differential/gearbox/power steering/valve spring oil cooler	na	na	na	6,400-9,500	<0.5
119M22I	diff/gearbox/small street vehicle <u>Engine Oil Cooler (EOC)</u>	100-150	2.2/2.6	13,000-17,500	8,400-13,000	<0.5
125M22I	small high performance vehicle EOC	160-190	2.1/2.4	17,000-22,000	10,000-15,500	<0.5
150M22I	high performance vehicle EOC	300-400	0.9/1.2	29,000-40,000	na	na
172M22I	high performance vehicle EOC	600+	0.8/1.0	40,000-60,000	na	na
610M22I	differential/gearbox/power steering/compact street vehicle EOC	90-130	4.8/na	15,000-20,000	10,000-15,000	<0.6
613M22I	differential/gearbox/power steering/small street vehicle EOC	170-200	4.0/4.5	19,000-26,000	12,000-18,500	<0.5
616M22I	differential/gearbox/power steering/mid-size street vehicle EOC	190-220	3.6/3.8	23,000-32,000	13,000-21,000	<0.5
619M22I	differential/gearbox/small high performance vehicle EOC	220-310	2.5/3.3	27,000-37,000	14,000-23,000	<0.5
625M22I	differential/gearbox/high performance vehicle EOC	325-425	2.0/2.5	33,100-46,000	16,000-27,000	<0.5
634M22I	high performance vehicle EOC	400-475	1.7/2.2	43,000-59,000	17,500-31,500	<0.5
640M22I	high performance vehicle EOC	450-550	1.6/2.1	45,000-67,000	18,500-33,500	<0.5
650M22I	high performance vehicle EOC	600+	1.1/1.8	56,000-78,000	19,000-36,000	<0.5
660M22I	high performance vehicle EOC	600+	1.0/1.7	63,000-90,000	na	na
910M22I	differential/gearbox/power steering/small street vehicle EOC	170-200	6.1/na	19,000-27,000	12,000-19,000	<0.7
915M22I	differential/gearbox/small high performance vehicle EOC	220-310	4.5/5.2	27,000-39,000	15,000-25,000	<0.55
920M22I	differential/gearbox/high performance vehicle EOC	300-400	3.0/4.2	35,000-50,000	16,500-29,500	<0.5
925M22I	high performance vehicle EOC	400-475	2.6/3.5	42,000-60,000	18,000-32,000	<0.5
Specialty Coolers						
172M22I D	high performance vehicle EOC	600+	0.9/1.1	44,000-65,000	na	na
619M22I-2P	differential/gearbox	na	na	na	15,500-26,000	<1.25
640M22I D	high performance vehicle EOC	600+	1.8/2.2	49,000-71,500	na	na
650M22I-3P	differential/gearbox	na	na	na	20,000-39,000	<1.5
920M22I-2P	differential/gearbox	na	na	na	17,500-30,428	<1.5
COM500-15	high performance vehicle EOC	600+	2.6/4.2	51,000-75,000	na	na
Fanpacks						
FP119M22I	differential/gearbox/small high performance EOC	100-150	2.3/2.7	16,000-19,000	9,500-13,500	<0.5
FP432M22I	differential/gearbox/high performance EOC	275-350	1.4/2.6	30,000-34,500	15,000-21000	<0.5
FP640M22I	differential/gearbox/high performance EOC	450-550	1.4/1.9	45,000-48,000	17,000-25,000	<0.5
FP920M22I	differential/gearbox/high performance EOC	300-400	3.9/4.1	38,000-47,000	17,500-30,000	<0.5
FP920M22I-2P	differential/gearbox	na	na	na	18,500-32,500	<0.5
AN Fitting sizes						
M22-AN4	valve spring cooler fitting					
M22-AN6	valve springs/differential/gearbox/power steering					
M22-AN8	Hi-po differential/gearbox/small & mid-size street vehicle EOC					
M22-AN10	wet sump EOC					
M22-AN12	dry sump EOC/high performance wet sump EOC					

* EOC hp and btu/hr range based on specific performance parameters that if varied may result in different performance results. Low EOC hp and btu/hr range based on typical wet sump high performance application and typical variable parameters. High EOC hp and btu/hr range based on typical dry sump high performance application and typical variable parameters. Wet Sump Parameters include: oil flow rate, 5 gpm; 20/50 engine oil or similar; 130°F ITD; 60mph airflow. Dry Sump Parameters include: oil flow rate, 8 gpm; 20/50 engine oil or similar; 140°F ITD; 80mph airflow.

** Trans/diff btu/hr range based on low/high set of performance variable parameters. Parameters include: Low: 0.75 gpm; Dextron II or similar; 130° F ITD; 60mph airflow. High: 1.5 gpm; Dextron II or similar; 140° F ITD; 80mph airflow.